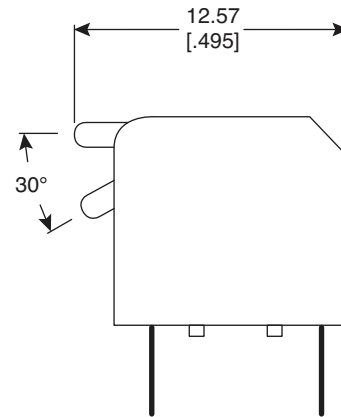
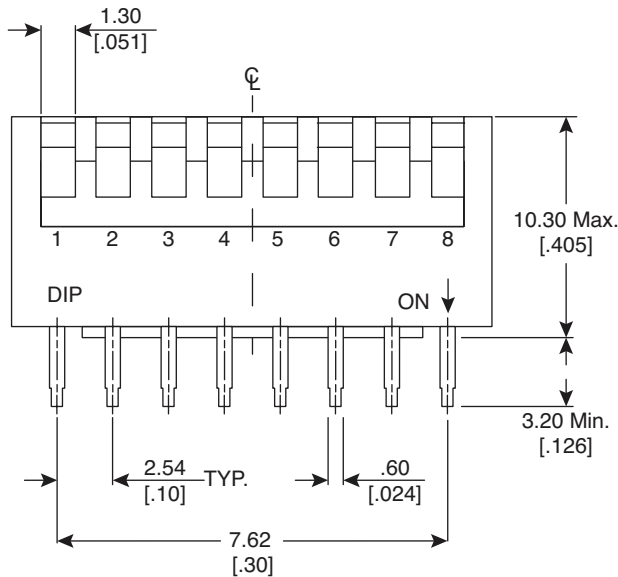
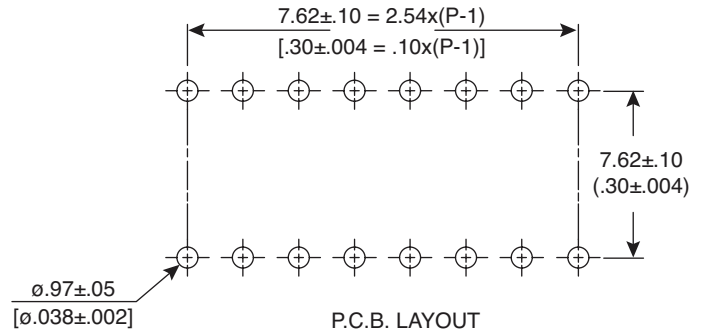
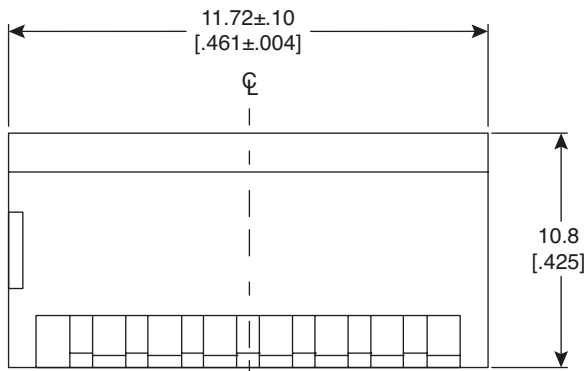


Dimensions: mm (in.)



Electrical Specifications:

- Rating: Switching: 25mA/24VDC
Non-Switching: 100mA/50VDC
- Contact Resistance: 50mΩ Max. (Initial)
- Insulation Resistance: 100MΩ Min.
- Dielectric Strength: 500V AC (50Hz or 60Hz) for 1 min.

Soldering Process:

- Manual Soldering:
Soldering Temp and Continuous Time: Max.350°C and Max. 5 seconds

Mechanical Specifications:

- Operating Temperature Range: -20° C to +70° C
- Storage Temperature Range: -40° C to +85° C

Note:

- RoHS Compliant

Side Actuated DIP Switch
106-LP04-EV

